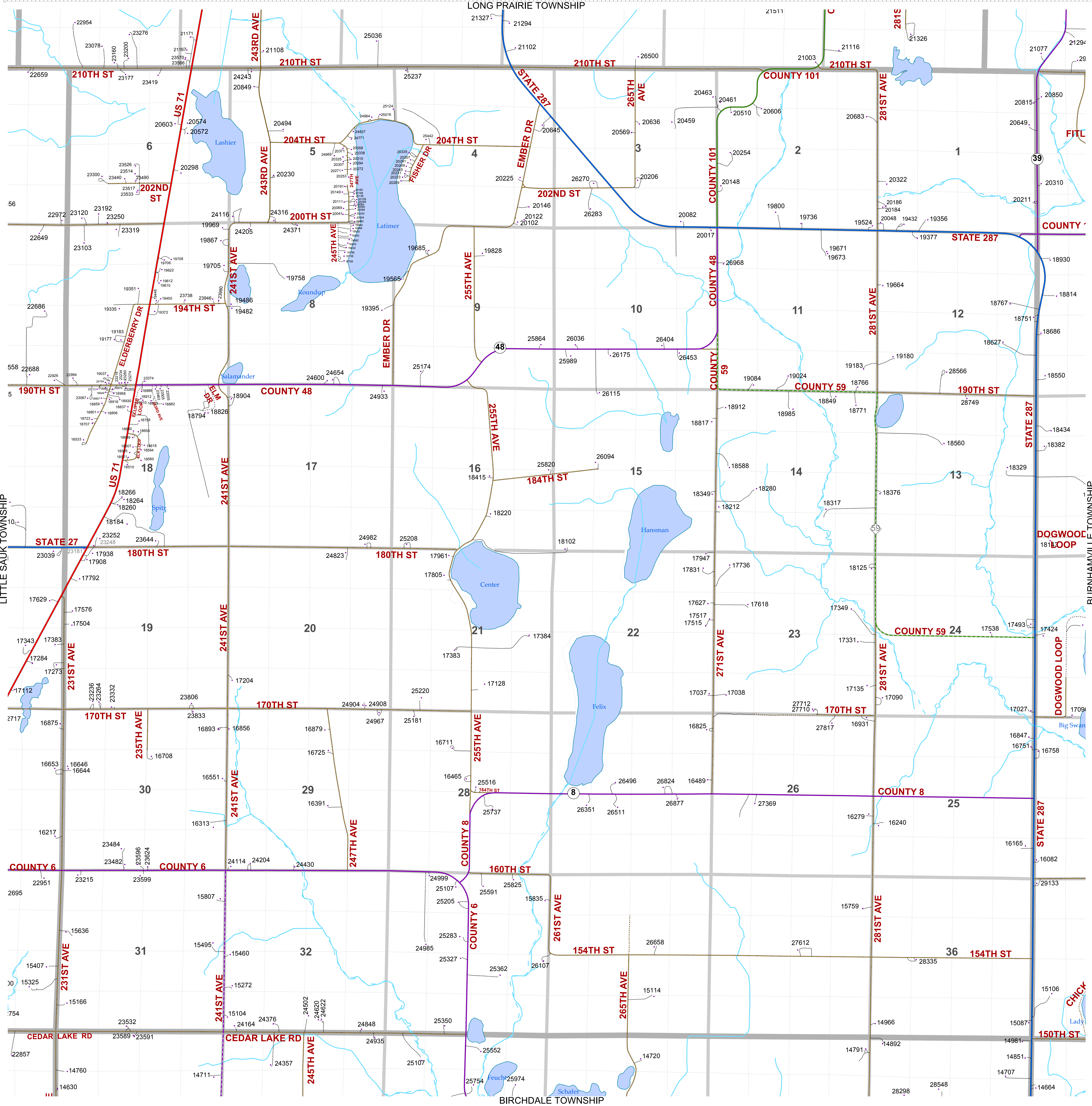


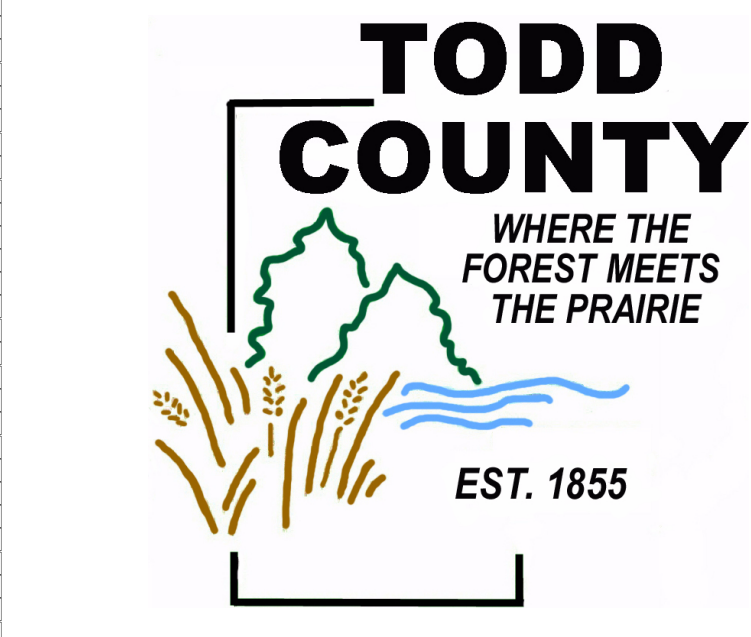
911 ADDRESSES

TODD COUNTY, MINNESOTA

TOWNSHIP: ROUND PRAIRIE TWP T 128 N R 33 W



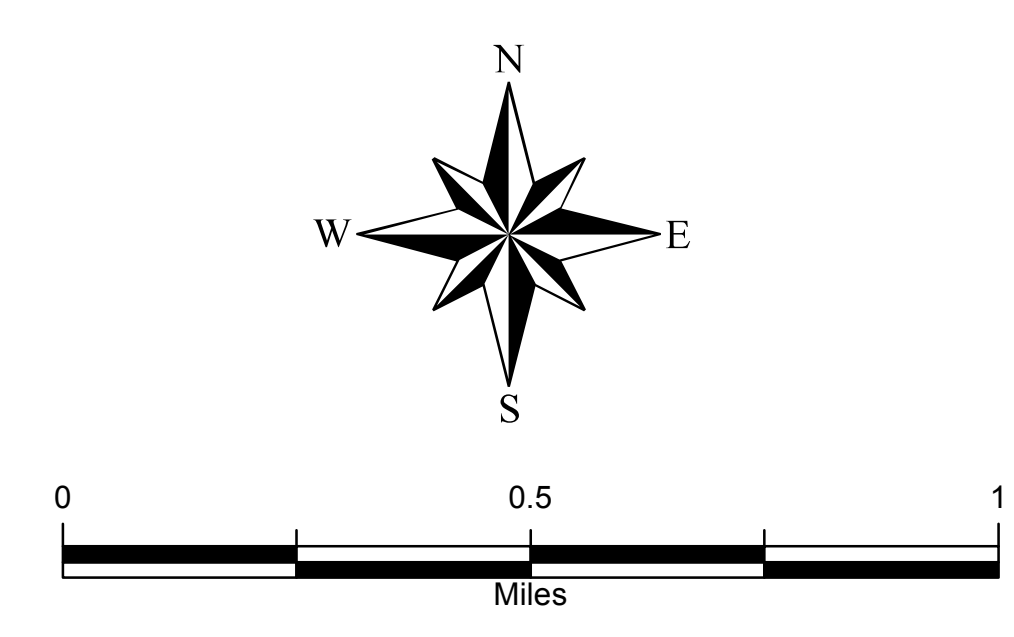
1:13,000



GIS & Land Services
215 1st Ave S - Suite 102
Long Prairie, MN 56347
(phone) 320-732-4248
(fax) 320-732-4803
www.co.todd.mn.us

- | | | | |
|---------------|--------------------|--------------|--------|
| Interstate | County Road-Paved | Municipal | Stream |
| U.S. Highway | County Road-Gravel | Private Road | Lake |
| State Highway | TWP-Paved | Driveway | City |
| CSAH-Paved | TWP-Gravel | Address Site | |
| CSAH-Gravel | Min. Maintenance | Section | |

Date: Jan 12, 2016



The Todd County GIS & Land Services Department has made every effort to provide the most accurate and up-to-date information available in this publication and cannot be held responsible for any unforeseen errors or omissions. If the recipient wishes to locate parcel corners and property lines, employ the services of a Registered Land Surveyor.